

# The AluK Colour Collection

A colourful choice



**ALUK**<sup>®</sup>





# Introducing the AluK colour collection

From contemporary to heritage, the AluK colour collection combines four high-quality colour ranges. Elements, Homestead, Spectrum and Urbane each offer a wide choice of durable coatings that are extremely resistant to scratching and corrosion.

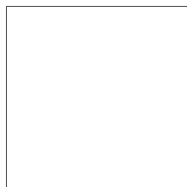
With an inspired range of textured, non-textured and metallic finishes, these palettes have been designed to reflect increasingly popular colour trends within the market.

# Elements

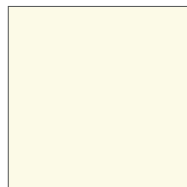
matt colour range

Inspired by the diversity of nature, Elements offers the perfect combination of rich colours and versatile shades. With 18 RAL options to explore, you can enjoy a stylish, matt finish to your windows and doors.

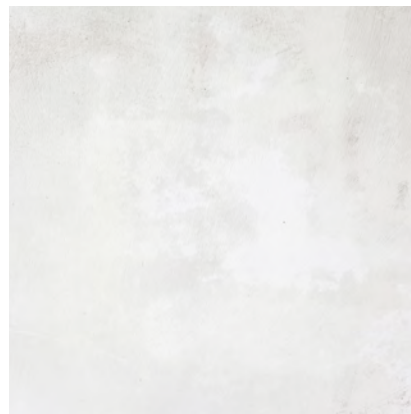
Qualicoat Class 1 compliant



Hipca White RAL9910HG



Ivory White RAL9010M



Grey RAL7038M



Light Cream RAL9001M



Mid Cream RAL1015M



Smoke Grey RAL9006M



Green Grey RAL7032M



Slate Grey RAL7015M



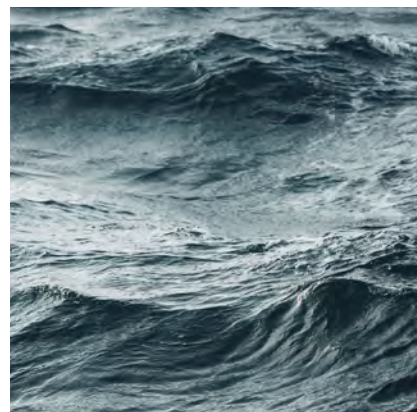
Anthracite Grey RAL7016M



Ocean Blue RAL5003M



Shadow RAL7012M



Midnight Grey RAL7021M



Dark Brown RAL8019M



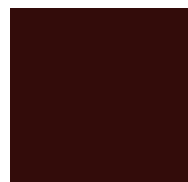
Warm Grey RAL7039M



Mid Green RAL6005M



Deep Black RAL9005M



Chocolate Brown RAL8017M



Warm Red RAL3004M

These images should only be used as a colour guide rather than a true representation of the actual product colour.



# Homestead

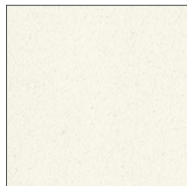
textured colour range

Inspired by the appreciation of tradition, Homestead offers the seamless combination of warm tones and classic shades. With 13 RAL options to discover, you can enjoy a tasteful, textured finish to your windows and doors.

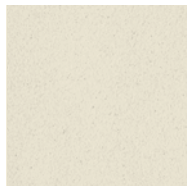
Qualicoat Class 1 compliant



Frost White RAL9910T



Munro Peak RAL9010T



Lambswool RAL9001T



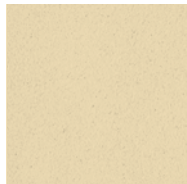
Vale Green RAL6021T



Monmouth Green RAL6003T



Anthracite Grey RAL7016T



Golden Cap RAL1015T



Holme Dune RAL1019T



Popping Crease RAL7034T



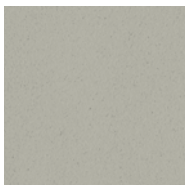
Coal Dust RAL7021T



Deep Black RAL9005T



Cairn Stone RAL7032T



Folly Stone RAL7044T

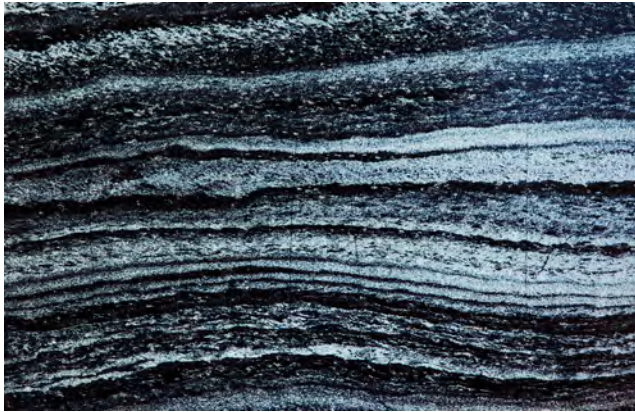
These images should only be used as a colour guide rather than a true representation of the actual product colour.

# Spectrum

textured metallic and special effects colour range

Inspired by the sophistication of architecture, Spectral offers the complimentary combination of stylish tones and refreshing shades. With 21 colours to admire, you can enjoy a tactile, textured finish to your windows and doors.

Qualicoat Class 2 compliant



Bleu 2700



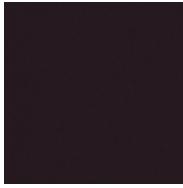
Noir 2300



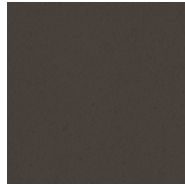
Senoual



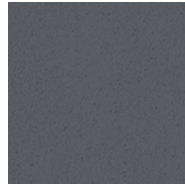
Bleu 2600



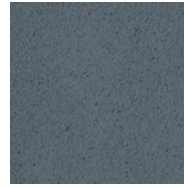
Managanese



Bohol



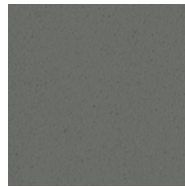
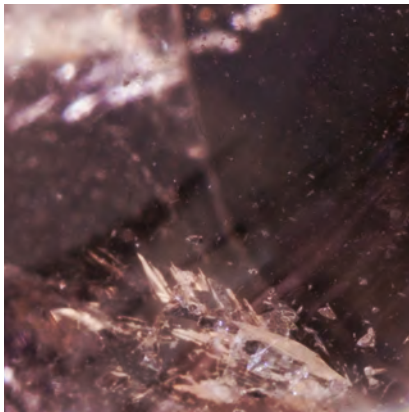
Gris 2400



Starlight



Brun 2650



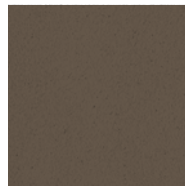
Pyrite



Gris 2900



Tijuka



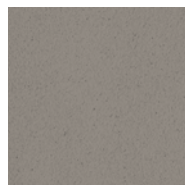
Gris 2500



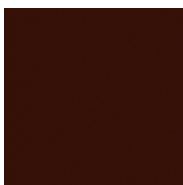
Rouge 2600



Mars



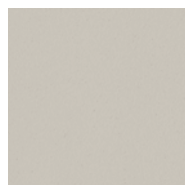
Gris 2800



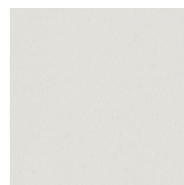
Innoko



Patah



Yazd



Detendre



Cotton

These images should only be used as a colour guide rather than a true representation of the actual product colour.



# Urbane

anodic colour range

Inspired by the intensity of contrast, Urbane offers the distinctive combination of robust tones and smooth shades that match the look and feel of an anodised finish. With 14 colours to choose from, you can enjoy a bold, protective finish to your windows and doors.

Qualicoat Class 2 compliant



Anodic Black



Steel Blue Grey 715



Steel Blue Platinum



Steel Blue Grey 713



Soft Champagne



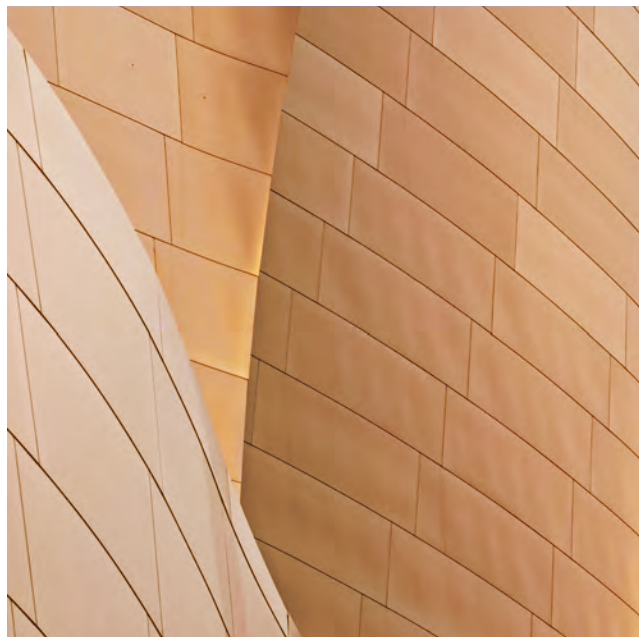
Soft Silver



Anodic Ice



Driftwood



Golden Beach



Gold Pearl



Gold Splendour



Steel Bronze 1



Steel Bronze 2



Anodic Bronze

These images should only be used as a colour guide rather than a true representation of the actual product colour.

## Elements

matt colour range

Elements is a tough powder coating that combines a contemporary matt look with the ability to withstand scratches and knocks encountered in indoor and outdoor public areas. It is extremely hard-wearing, and offers a low-maintenance solution for high-traffic areas.

## Homestead

textured colour range

Homestead is a tough powder coating that combines a contemporary textured range of colours with the ability to withstand scratches and knocks encountered in indoor and outdoor public areas. Homestead features a soft-feel, low-gloss finish which helps to disguise surface imperfections. It is extremely hard-wearing, and the fine textured finish offers a low-maintenance solution for high-traffic areas.

## Spectrum

textured metallic  
colour range

A range of superdurable finishes demonstrating variations in colour and patination. Formulated in an advanced polyester resin, Spectrum offers a wide array of textures and metallic effects that provide significantly enhanced colour and gloss retention properties supported by extended guarantee terms and lower maintenance requirements. The colour palette aims to meet the leading design trends within the architectural industry.

## Urbane

anodic colour range

Attractive metallic effect finishes that provide a great alternative to anodised aluminium. Urbane colours are supplied in superdurable polyester technology to offer a long service life. Benefits compared with anodising for aluminium include: easy repair of coating damage; tighter control of colour consistency between parts; proven long-term resistance to weathering with extended guarantee periods, and minimal environmental impact.

---

## Why choose AluK?

At AluK, we understand the challenges of modern building construction. For more than sixty years we have been working around the globe to deliver the finest tailored aluminium façade systems.



**150+**  
employees



**350,000 sq. ft**  
factory space with  
500 sq. ft design studio,  
based in Chepstow



**4,000 sq. ft**  
architectural design  
studio in central London



**35,000**  
orders processed  
per year



**4,500 tonnes**  
aluminium sold per year  
£190M installed value

Approved Applicator  
Partner of Interpon  
Powder Coatings.

CREATING BRIGHT FUTURES

## In the mix

For more information on our colour range,  
please email or call us today:

[info.uk@aluk.com](mailto:info.uk@aluk.com) | 01291 639 739

**ALUK**<sup>®</sup>